

# TP-Link HX510 Set Up Guide - Wirelessly



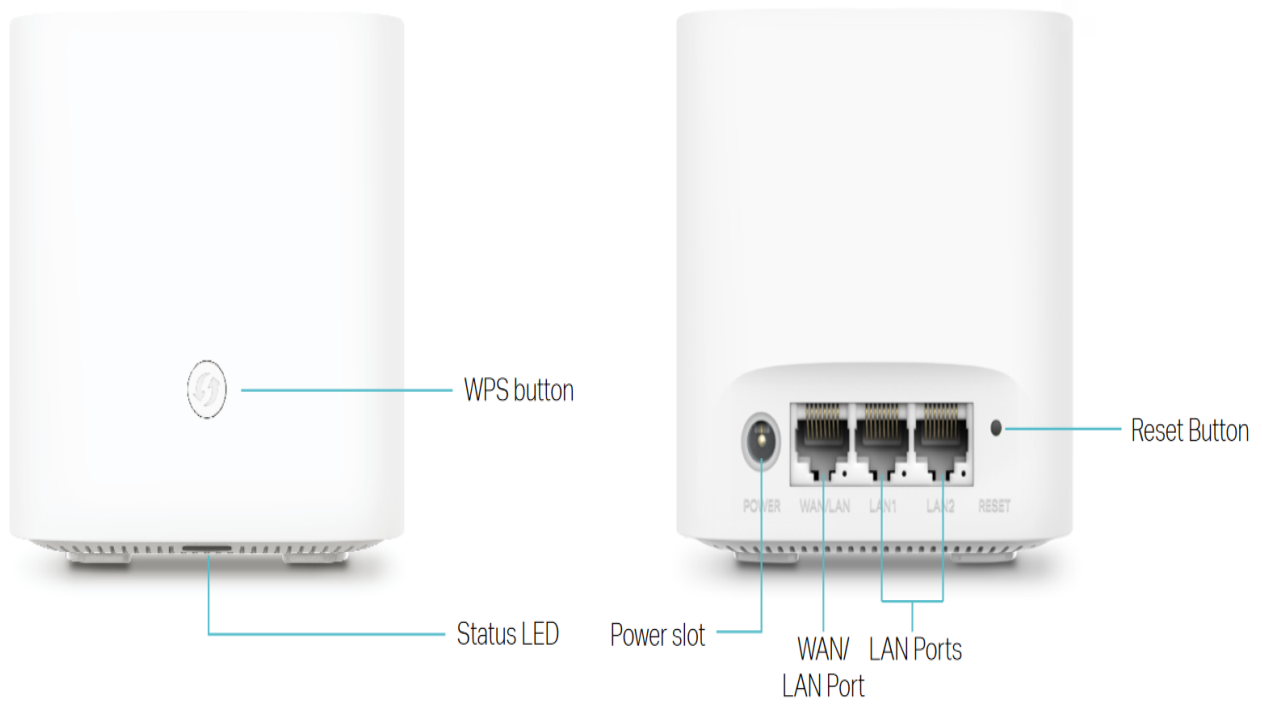
The Whole Home Mesh Wi-Fi AP system is designed to extend your network coverage across your entire home. It consists of a Main AP that connects to a wired router, modem, or gateway, and one or more agents that extend the wireless coverage.

Empowered by EasyMesh technology, HX510 provides a strong WiFi signal in every corner of your home. Wireless connections and optional Ethernet backhaul work together to link each unit, providing even faster network speeds and truly seamless coverage with one WiFi name.

Click to expand each section and discover detailed information on the HX510, including setup guides, features, and troubleshooting tips to help you maximise your device's potential.

## Appearance

The device features an LED that varies in behavior based on its operational status and is equipped with a WPS button, three RJ-45 Ethernet ports, a power port, and a RESET button.



## Understanding the LED Status





**Setting Up TP-Link HX510 AX3000 Whole Home Mesh Wi-Fi**

**HX510** is designed to work alongside your VX230v Modem or any EasyMesh-compatible modem, allowing it to act as an additional Mesh device.

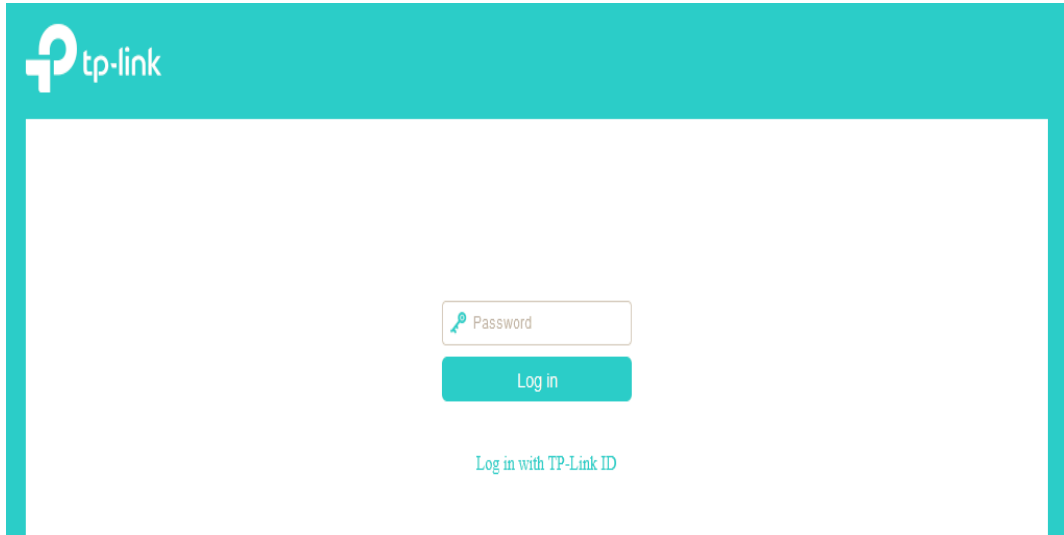
For a visual guide on setting up the HX510, watch the video below. You can also follow the step-by-step instructions provided further down.

**Step-by-step guide on how to set up HX510 Mesh Unit Wirelessly**

1. Access your TP-Link VX230 modem by typing in <http://tplinkmodem.net/> or <http://192.168.1.1/> on a web browser and

log in with the password you set for the modem.

The default password is **admin1**.



Alternatively, you can log in using your TP-link ID.

2. Once logged in, go to **Basic** > **Mesh** and make sure EasyMesh is enabled.

tp-link

Search

Network Map

Internet

Wireless

Guest Network

Multi-SSID

Telephony

USB Sharing

Parental Controls

TP-Link Cloud

Mesh

Quick SetupBasicAdvanced

Log outRebootUpgrade

### EasyMesh

Connect EasyMesh devices to create a mesh network for seamless Wi-Fi coverage and centralized management.

EasyMesh Enable: ☒

Note: WPA3-Personal and WPA2-Enterprise are unavailable since EasyMesh doesn't support these security types.

**What's EasyMesh?**

EasyMesh implements a standards-based approach, combining easy-to-use, self-adapting Wi-Fi with a flexible design, easy setup, and enhanced network intelligence. In an Mesh network, your mobile device will seamlessly switch between the main Router/Gateway(Controller) and Agents, provides the optimal Wi-Fi connection as you move through your home.

✓ Mesh Network

✗ Common Network

### EasyMesh Controller

Use this device as an EasyMesh Controller if:  
This device acts as a gateway that directly connects to your ISP network, or  
You already have a gateway that doesn't support EasyMesh.

In this case, click "Add Mesh Device" to build EasyMesh network.

3. Next, go to Network Map and click on **Add Mesh Device**

Search

Network Map

Internet

Wireless

Guest Network

Multi-SSID

Telephony

USB Sharing

Parental Controls

TP-Link Cloud

Mesh

Quick Setup

Basic

Advanced

Log out

Reboot

Upgrade

Internet

Main AP

2.4GHz 5GHz

Wireless Clients

Wired Clients

Phone

USB Disk

Click

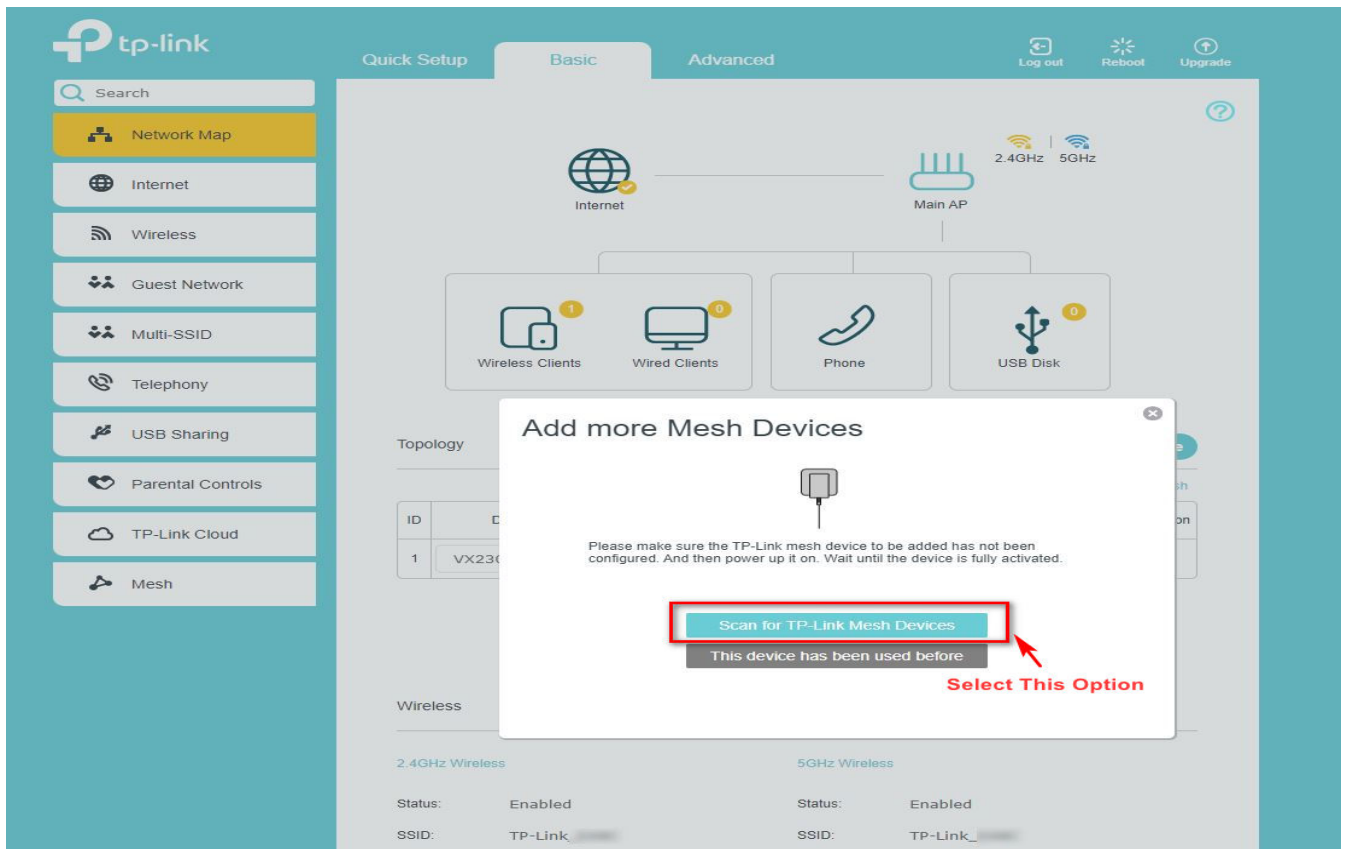
Add Mesh Device

Topology

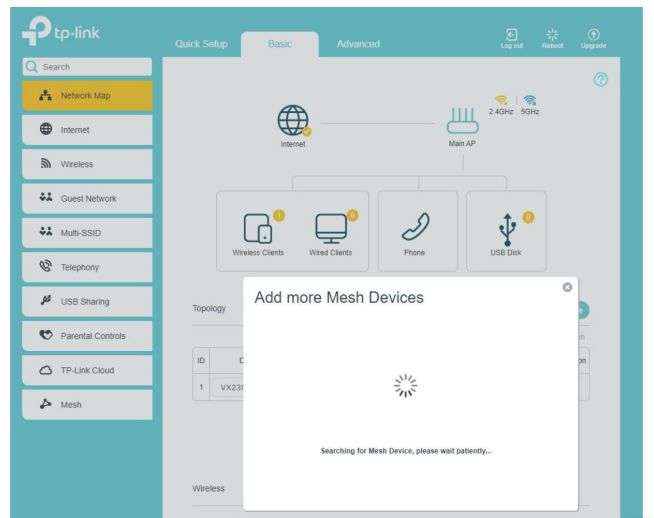
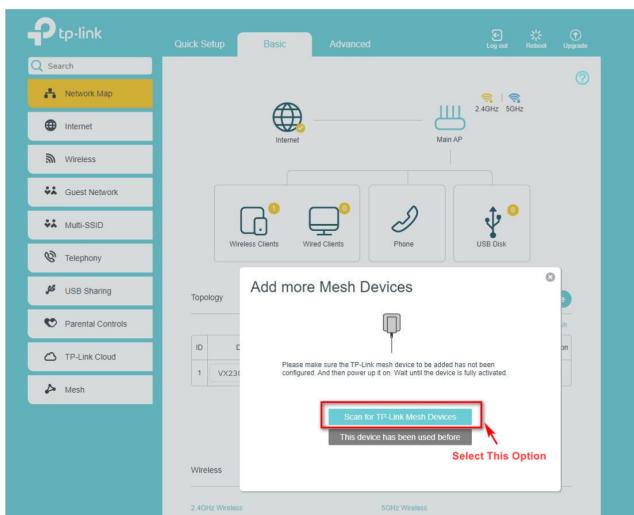
Refresh

ID	Device Name	IP Address	MAC Address	Connection Type	Signal Strength	Link Rate	Operation
1	VX230v_	192.168.1.1		--	--	--	--

#### 4. Select Add By Scanning

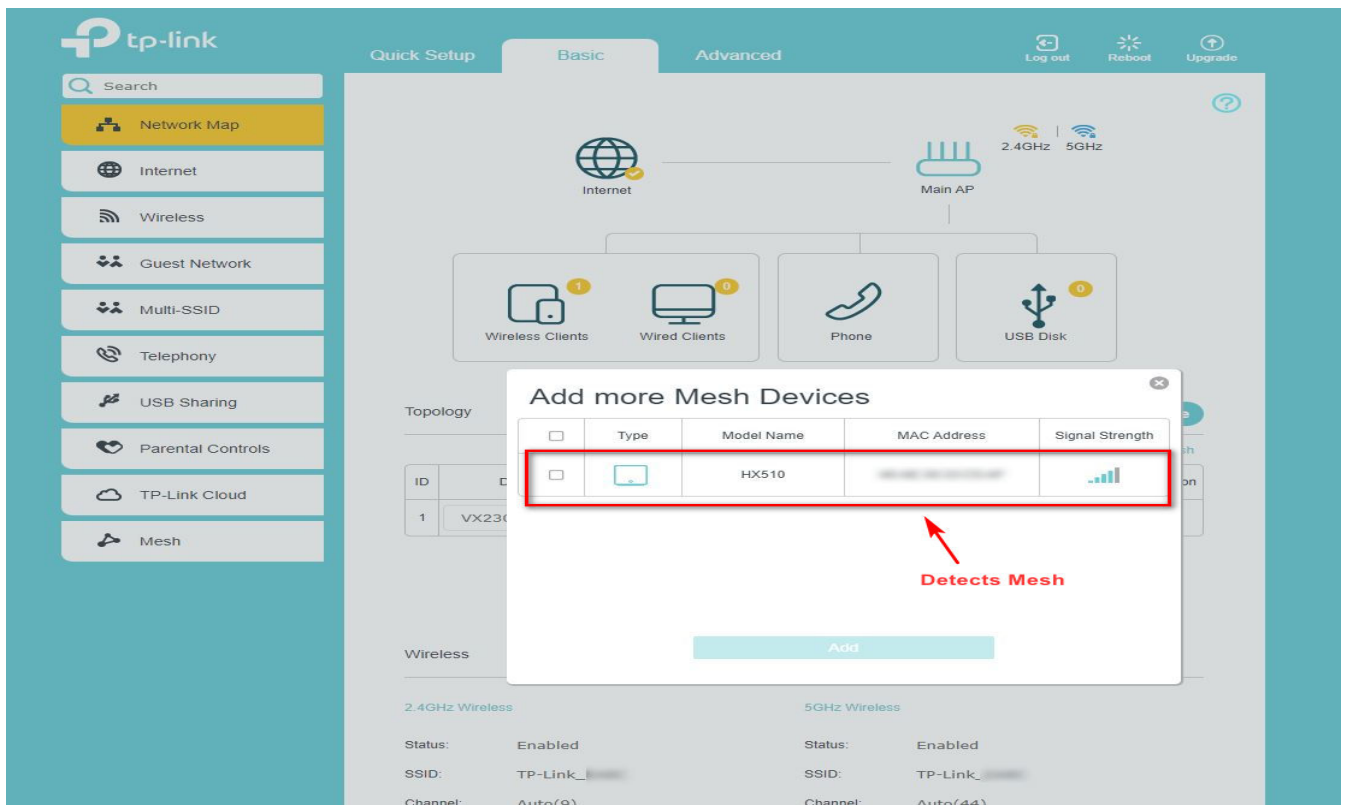


## 5. Click **Scan for TP-Link Mesh Devices**

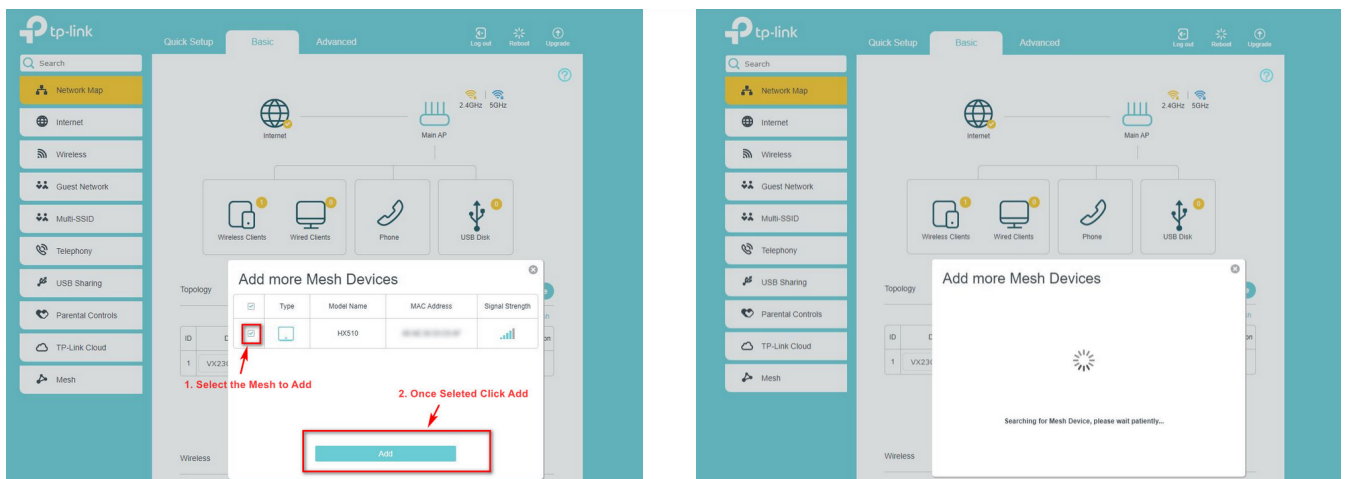




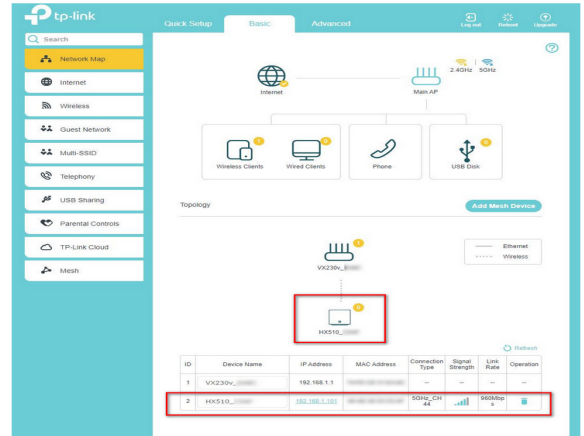
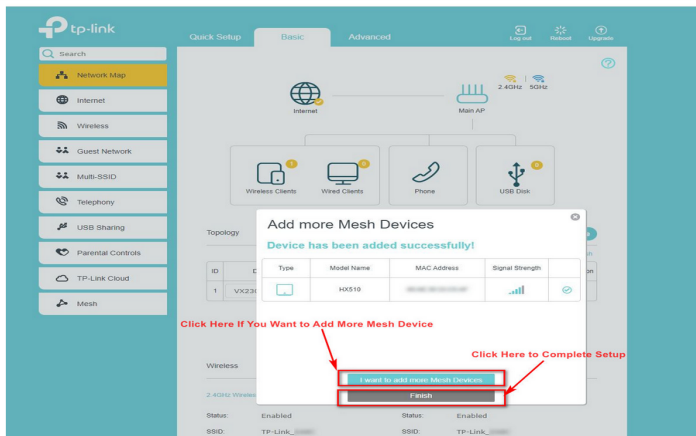
6. The detected mesh will appear as shown below.



7. Tick the box to add the Mesh then click the **Add** button.



8. Click Finish. Set up complete! You will see the added device as shown below.



## How to Remove the Mesh Device from your TP-Link VX230 Modem

1. Click on the trash icon as shown below.
2. Select Yes to completely remove the added Mesh device.

tp-link

Quick Setup Basic Advanced Log out Reboot Upgrade

Search

Network Map

Internet

Wireless

Guest Network

Multi-SSID

Telephony

USB Sharing

Parental Controls

TP-Link Cloud

Mesh

Wireless Clients 1

Wired Clients 0

Phone

USB Disk 0

Topology

Add Mesh Device

VX230v\_1

Are you sure to remove this device from easymesh topology network?  
This will reset it to its factory settings. Click Yes to continue.  
Unplug any Ethernet cables between the device and other Mesh devices.

No Yes

2. Click 'Yes' To Remove Mesh

1. Remove Added Mesh Click Here

ID	Device Name	IP Address	MAC Address	Connection Type	Signal Strength	Link Rate	Operation
1	VX230v_1	192.168.1.1		--	--	--	
2	HX510_1	192.168.1.101		5GHz_CH 44		1201Mbps	

**To view the mesh devices and connected clients in the network:**

1. Go to Basic > Network Map.
2. Click the "Main AP" icon to view all mesh devices.

Search

Network Map

Internet

Wireless

Guest Network

Multi-SSID

Telephony

USB Sharing

Parental Controls

TP-Link Cloud

Mesh

Quick Setup

Basic

Advanced

Log out

Reboot

Internet

Main AP

Wireless Clients

Wired Clients

Phone

USB Disk

Topology

Add Mesh Device

Refresh

ID	Device Name	IP Address	MAC Address	Connection Type	Signal Strength	Link Rate	Operation
1	VX230\	1		--	--	--	--

3. Click the "Wired and Wireless Clients" icon to view all connected clients.

tp-link

Quick Setup Basic Advanced Log out Reboot

Search

Network Map

Internet

Wireless

Guest Network

Multi-SSID

Telephony

USB Sharing

Parental Controls

TP-Link Cloud

Mesh

Internet

Main AP

2.4GHz 5GHz

Wireless Clients

Wired Clients

Phone

USB Disk

Wireless Clients

ID	Name	IP Address	MAC Address	Connection Type	Link Rate	Attached To
1	Chromecast Ultra	192.168.1.100	24:7D:00:12:00:00:00	5GHz_CH48	400Mbps	5555555555555555

## To manage an EasyMesh device in the network:

Click the Mesh device's IP Address to redirect to the web management page of this device and view detailed information.



Refresh

ID	Device Name	IP Address	MAC Address	Connection Type	Signal Strength	Link Rate	Operation
1				--	--	--	--
2				5GHz_CH 48		1080Mbps	

Online URL:  
<https://articles.spintel.net.au/article/tp-link-hx510-set-up-guide-wirelessly.html>