

Configuring Asus Modem for SpinTel NBN

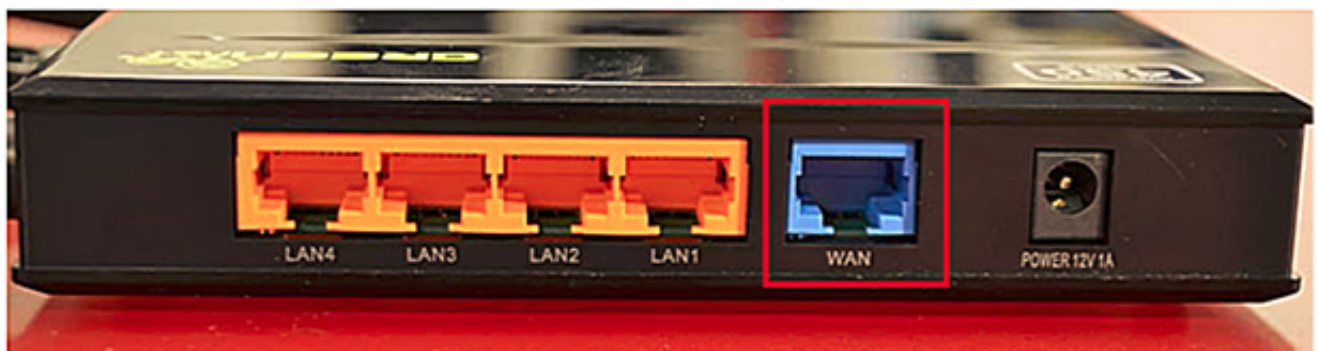
How do you know if your Asus modem is compatible with nbn?

There are 2 different types of ports you need to check whether your modem is compatible with the type of nbn service that you have on your premise.

1. **DSL port** - often grey in colour, uses RJ11 cable. This is the same as the old telephone cable you would use to plug your home phone into the wall socket.



2. **WAN port** - Also known as the internet port that uses RJ-45 Ethernet cable to connect your Asus modem to the nbn connection device.



Some modems have both of these ports, and some only have one. To identify which port is required for your nbn type of service, check the table below.

NBN type	Modem connection type	Authentication
Fibre to the Premise	Router/WAN connection	IPOE/Dynamic/DHCP/
Fixed Wireless	Router/WAN connection	IPOE/Dynamic/DHCP/
Hybrid Fibre Coaxial	Router/WAN connection	IPOE/Dynamic/DHCP/
Fibre to the Curb	Router/WAN connection	IPOE/Dynamic/DHCP/
Fibre to the Node	VDSL Modem required	IPOE/Dynamic/DHCP/
Fibre to the Basement	VDSL Modem required	IPOE/Dynamic/DHCP/

How Do You Set up Your Asus Modem?

1. If there is **no NBN Connection Box** installed, connect the DSL port on the back of your Asus modem to your phone wall socket using a phone cable.
2. If **there is an NBN Connection Box** installed, connect to the WAN/Internet port on the back of your modem to your NBN Connection Box.
3. Connect any of the LAN ports on the back of your modem to your PC (optional)
4. Plug the NBN connection box, if there's any, to the power socket
5. Connect the power port on the back of your modem to your power socket.
6. Ensure the modem is not locked to a specific provider. If it is, contact your provider to unlock it or use an unlocked modem.
7. Perform a factory reset on the modem if needed. Reconnect your devices using the default login credentials, which are typically found on the modem label.
8. Open a web browser and enter the modem's default IP address to configure the modem.

How Do You Log Into Your Asus Modem?

To access the modem interface, please make sure your device is connected to your Asus modem through a wired or wireless connection.

1. Open a web browser and enter 192.168.1.1 or <http://router.asus.com> in the address bar, then press **[Enter]**.

If the IP address does not work, please check the label attached to the back of the modem/router. Else, check your router's IP address. For instructions, click [here](#).

2. Enter **admin** for both the username and password and click Login. If you have changed the login credentials, please enter the current username and password for your modem interface.

How Do You Configure Your Asus Modem?

1. From the navigation panel, go to **Advanced Settings > WAN > Internet Connection**

2. From the WAN Connection Type drop-down list, select **IPoE/ Automatic IP**.

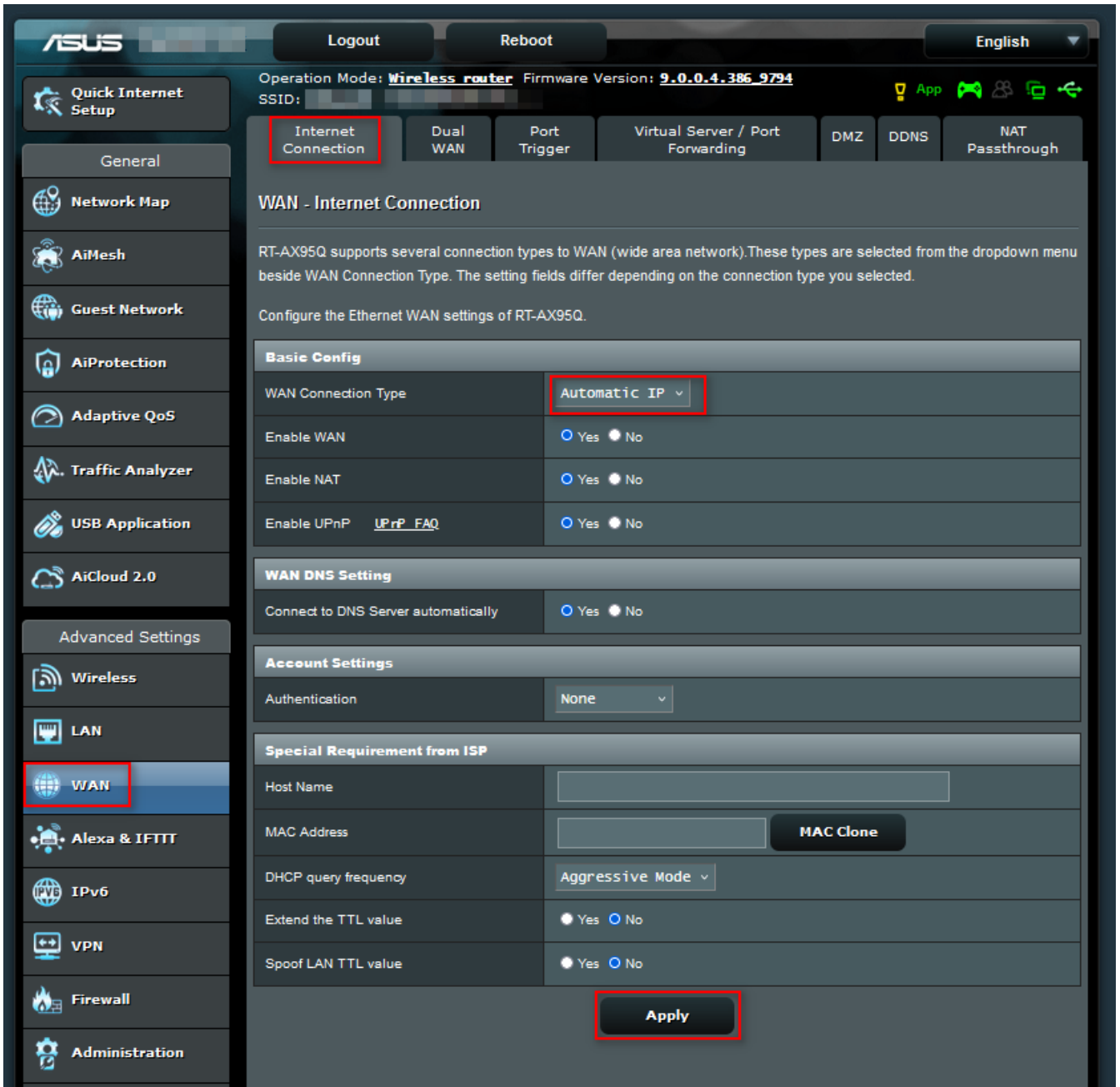
3. Leave any other settings to its default.

4. Click **Apply** to update the settings.

5. Wait **3-5 minutes** for the modem to go online, then test the service.

Different GUI versions

version 1



version 2

Internet Connection | QoS | Port Trigger | Virtual Server | DMZ | DDNS

WAN - Internet Connection

RT-N56U supports several connection types to WAN. These types are selected from the dropdown menu beside WAN Connection Type. The setting fields differ depending on the connection type you selected.

WAN Connection Type: Automatic IP

Enable UPnP? Yes No

Enable PPPoE Relay? Yes No

WAN IP Setting

Get the WAN IP automatically? Yes No

IP Address:

Subnet Mask:

Default Gateway:

WAN DNS Setting

Connect to DNS Server automatically? Yes No

DNS Server1:

DNS Server2:

Account Setting

User Name:

Password:

MTU: 1492

MRU: 1492

Service Name:

Access Concentrator Name:

PPTP Options: Auto

Additional pppd options:

Special Requirement from ISP

Select ISP: None

Choose IPTV STB Port: None

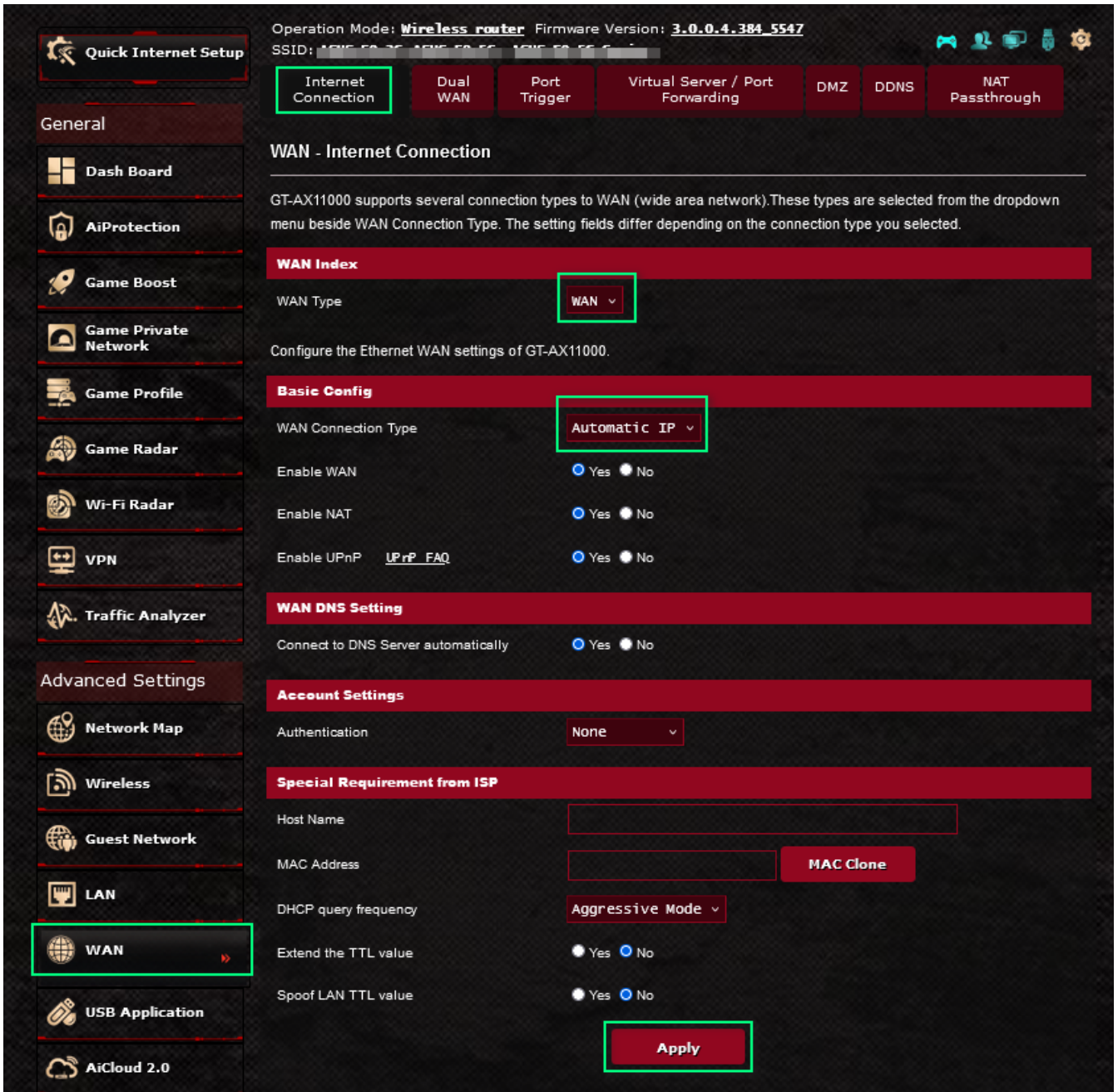
VPN Server:

Host Name:

MAC Address: 20CF300F3E77

Apply

version 3



Setting up your Home Phone

Have a Home Phone included in your service package? Follow this [guide](#) to set up your Home Phone using a BYO modem.

Online URL:

<https://articles.spintel.net.au/article/configuring-asus-modem-for-spintel->

[nbn.html](#)