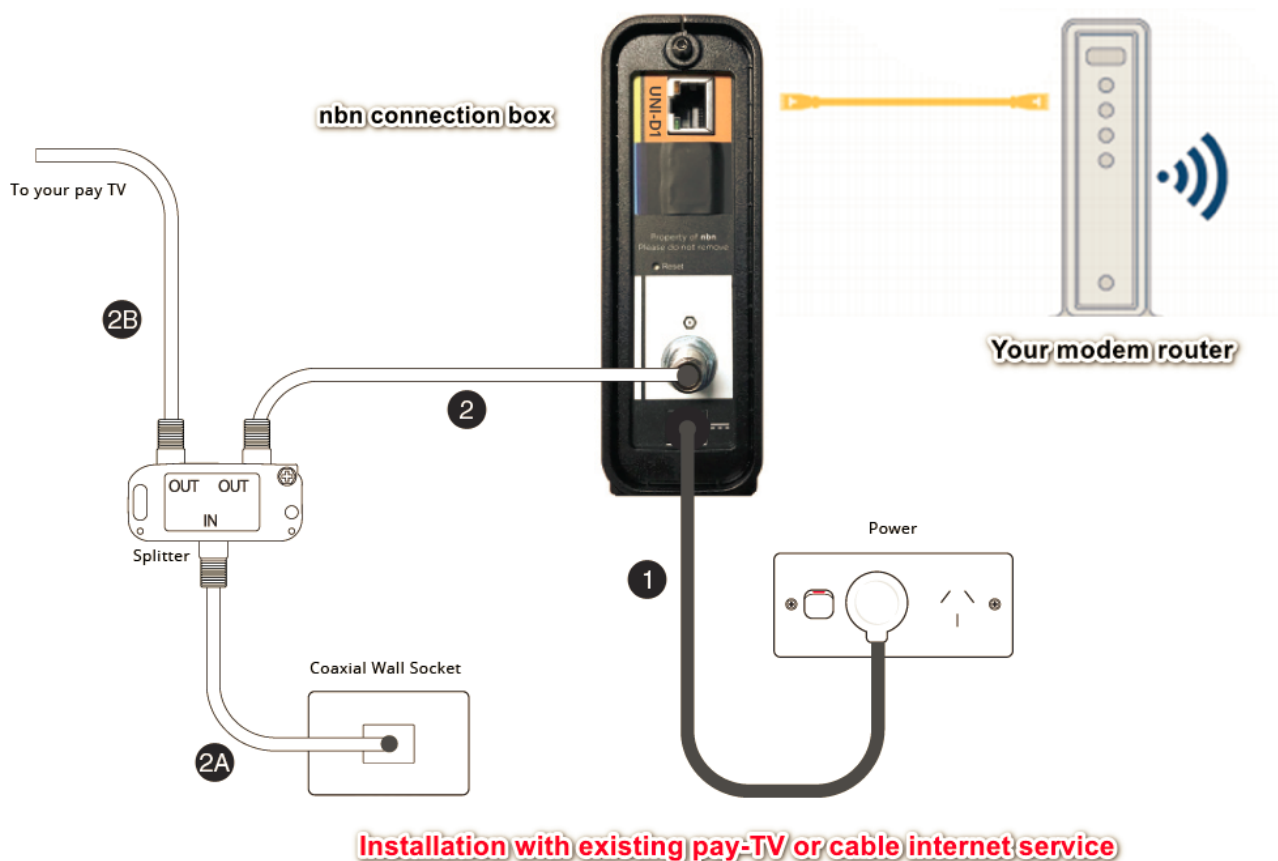


# Setting up your HFC Connection

## What is HFC NBN?

HFC stands for **Hybrid Fibre Coaxial**, a type of internet connection that utilises the existing ‘pay TV’ or cable network where **nbn™** takes the final part of the access network connection. In this circumstance, an HFC line will be run from the nearest available fibre node to your premises.

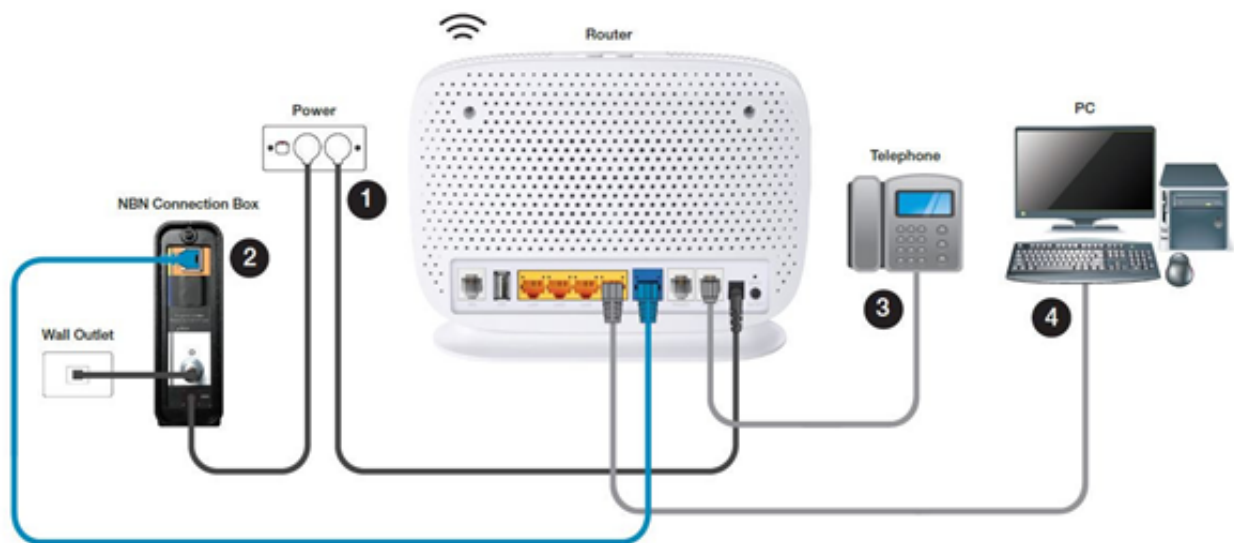




## What do I need for HFC NBN?

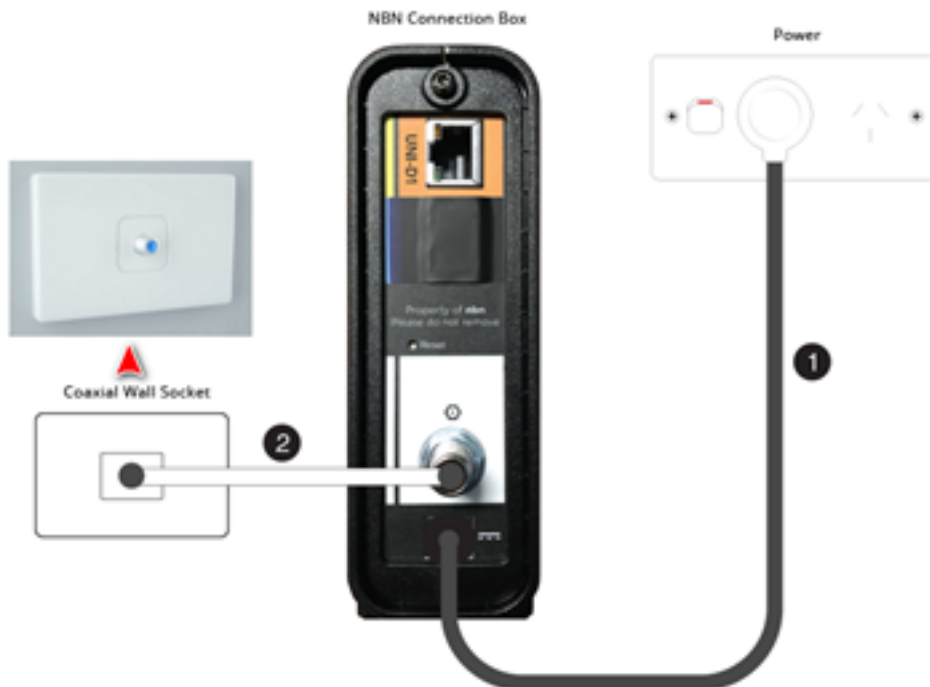
For new installations, NBN Co will supply a **utility box** and install it on the outside of your house, as well as a **connection box** inside your house - ducting and drilling works may require.

- An NBN-ready modem router is still needed, connected to the nbn connection box through an ethernet cable.
- If you have cable TV such as Foxtel that uses this coaxial outlet, a splitter is required to hook up both HFC and cable TV.
- Connect your home phone services to your modem router as normal.



## How do I set up an HFC connection?

1. Locate the wall outlet (that looks similar to the one in the image below) and connect the **nbn**<sup>TM</sup> box (branded Aris) using the provided coaxial cable.

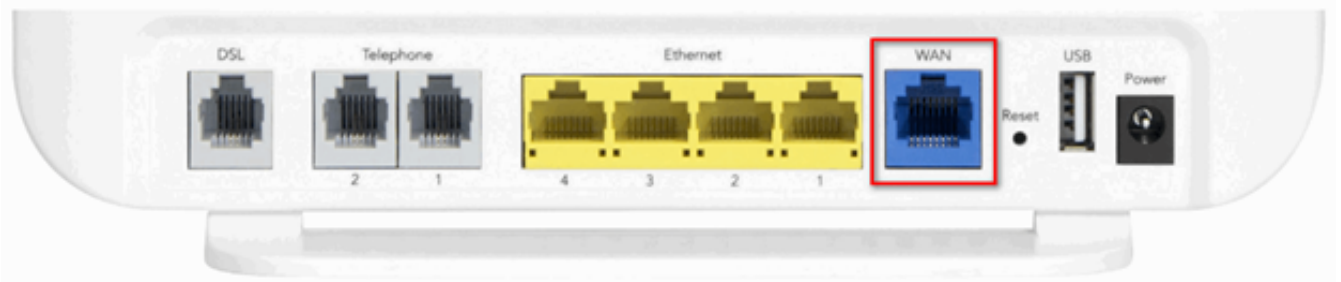


2. Connect the power cable to the black port on the **nbn**<sup>TM</sup> box and the other end to the power outlet.

3. Use an Ethernet cable, usually blue or yellow, and connect the UNI-D port of the **nbn**<sup>TM</sup> box,



to the blue WAN port of the modem.

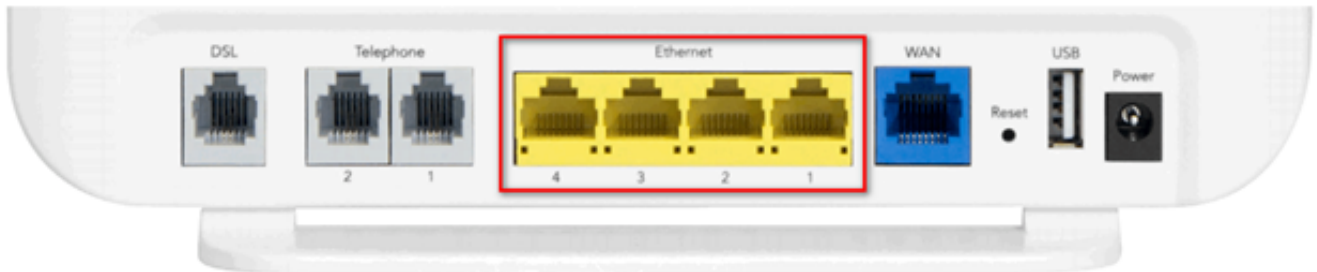


Note: some modems would label the WAN port as "Internet"



## Ethernet Connection

You can connect any Ethernet capable devices to one of the yellow LAN ports to access the internet.



## Wireless Connection

Use the wireless security card to find the WIFI network name and the password which can be found inside the modem box. You can also find the details on the back or bottom of your modem.



Also check nbn™ Hybrid Fibre Coaxial explained (HFC)

Online URL:

<https://articles.spintel.net.au/article/setting-up-your-hfc-connection.html>