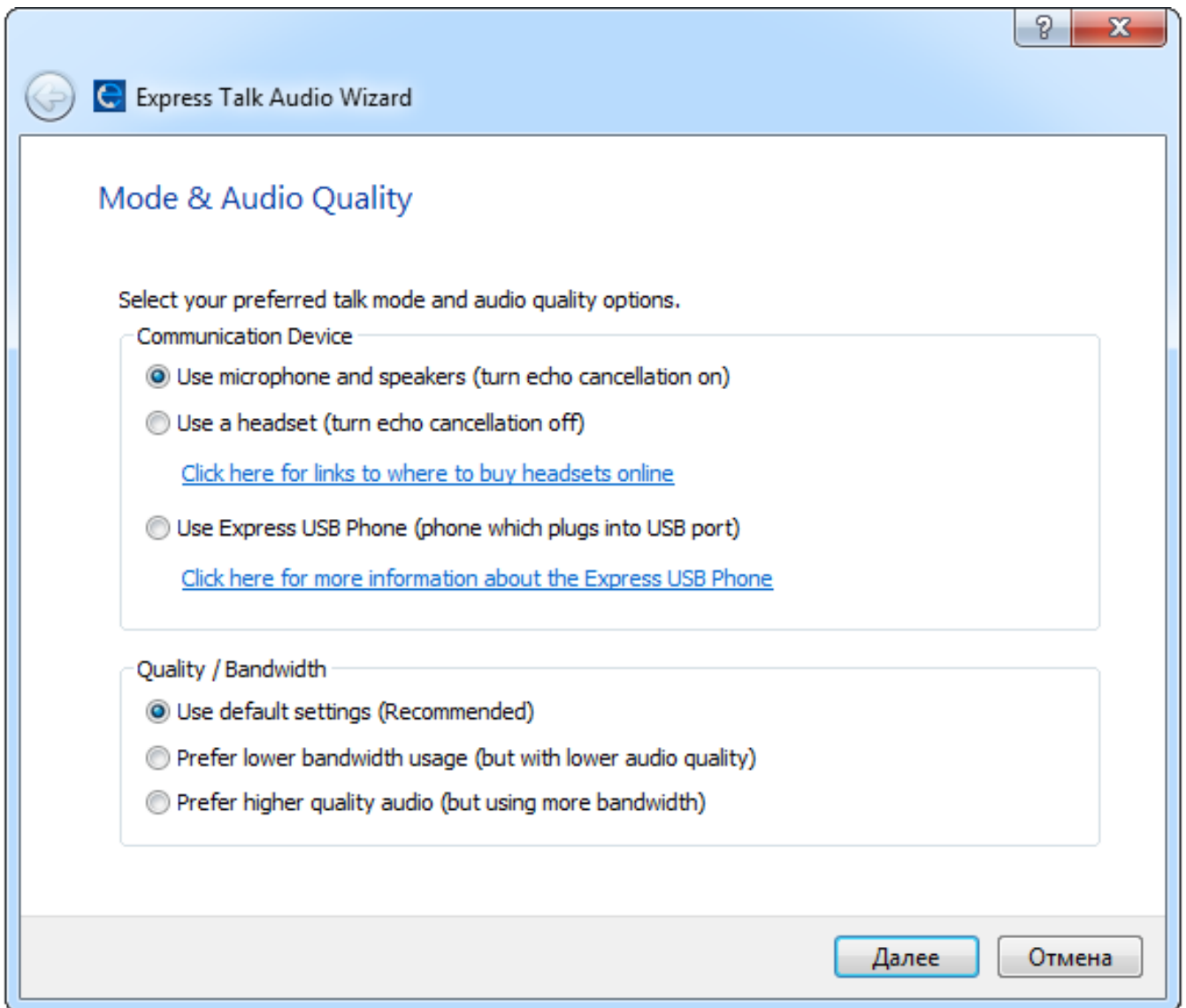


Express Talk for Windows Setup

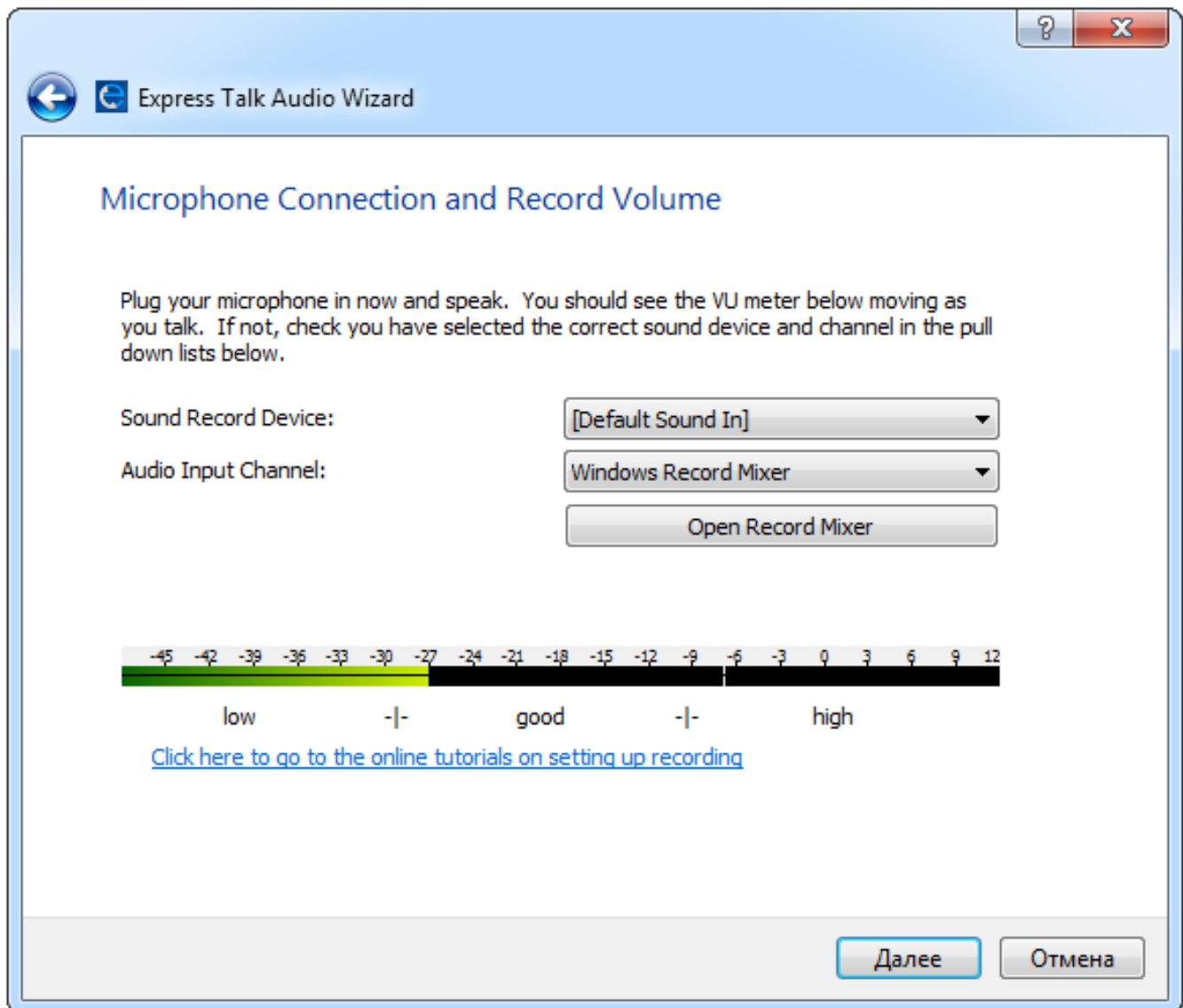
1. Download the application.

After the installation, open the «Mode & Audio Quality» tab. In the Communication Device section, select "Use microphone and speakers". In the Quality / Bandwidth section, select "Use default settings (Recommended)". Click "Next"

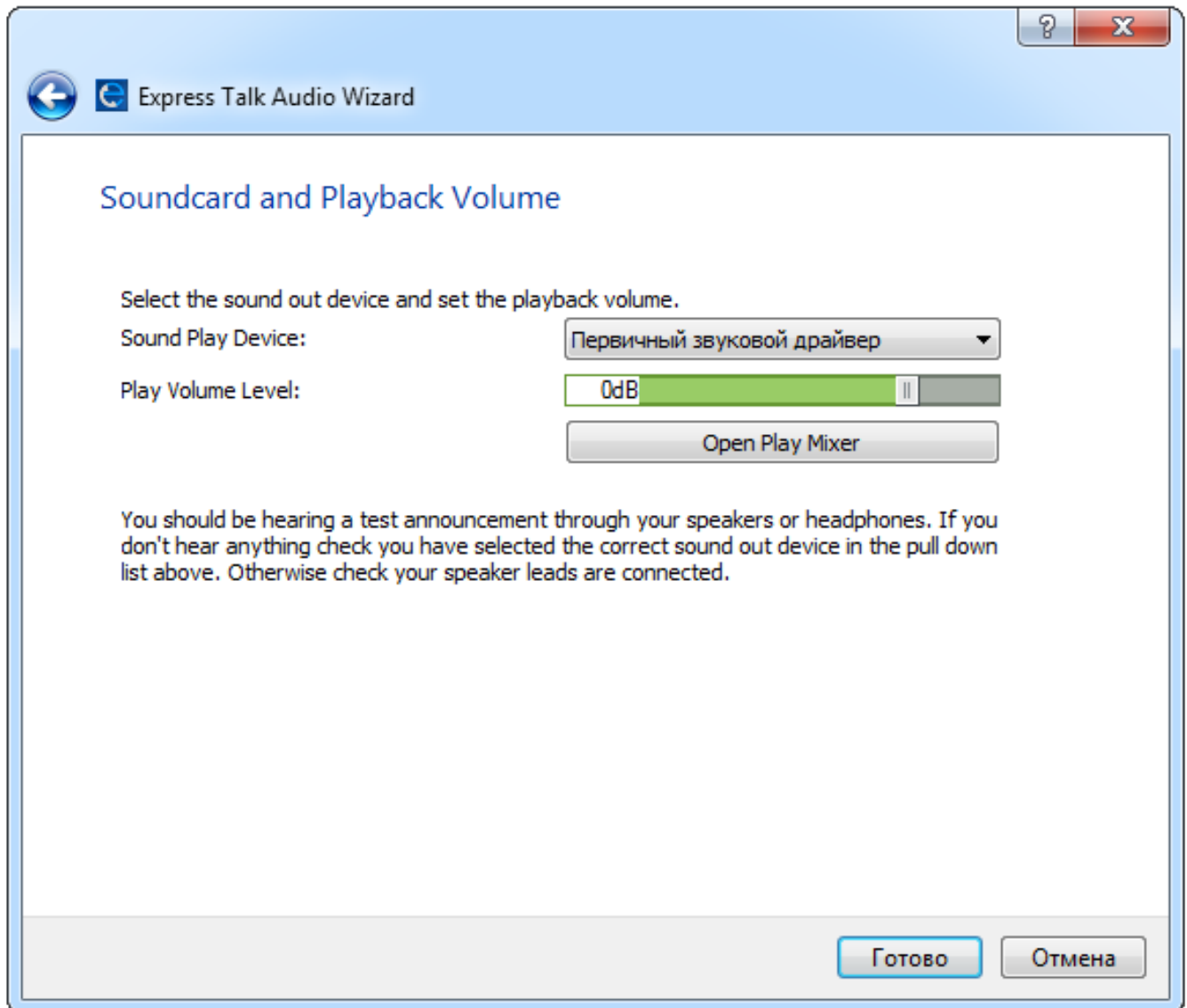


2. Select your hardware from the Sound Record Device options list in the Microphone Connection and Record Volume section. Leave the Audio Input

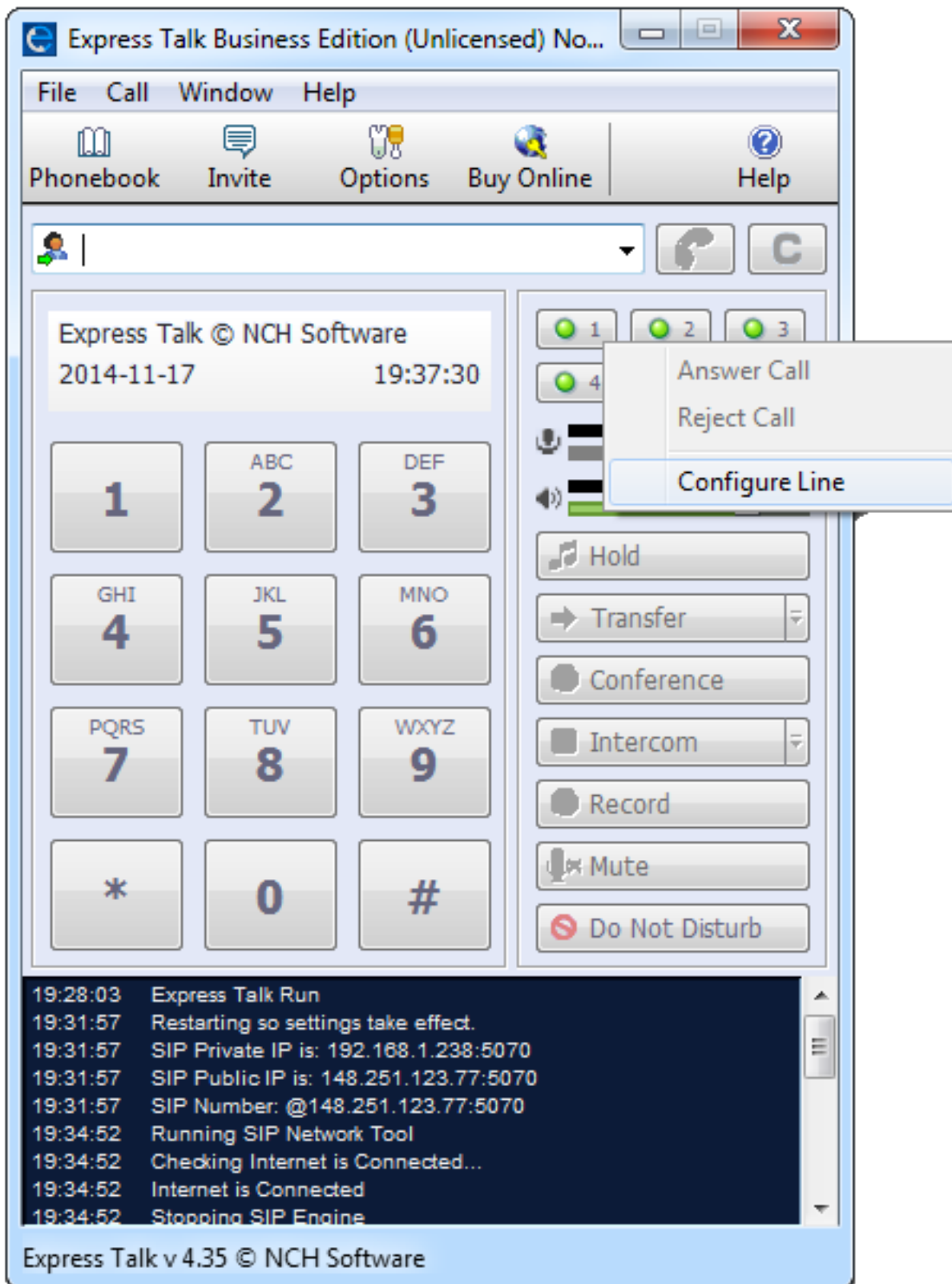
Channel as the default. Click "Next".



3. Select your hardware from the Sound Play Device options list in the Soundcard and Playback Volume section. Click "Next".



4. Right-click with your mouse on line 1 and select "Configure Line"



5. Enter the following settings:

Full 'Friendly' Display Name: (Your SIP number)

Server (SIP Proxy or Virtual PBX): 203.23.236.96

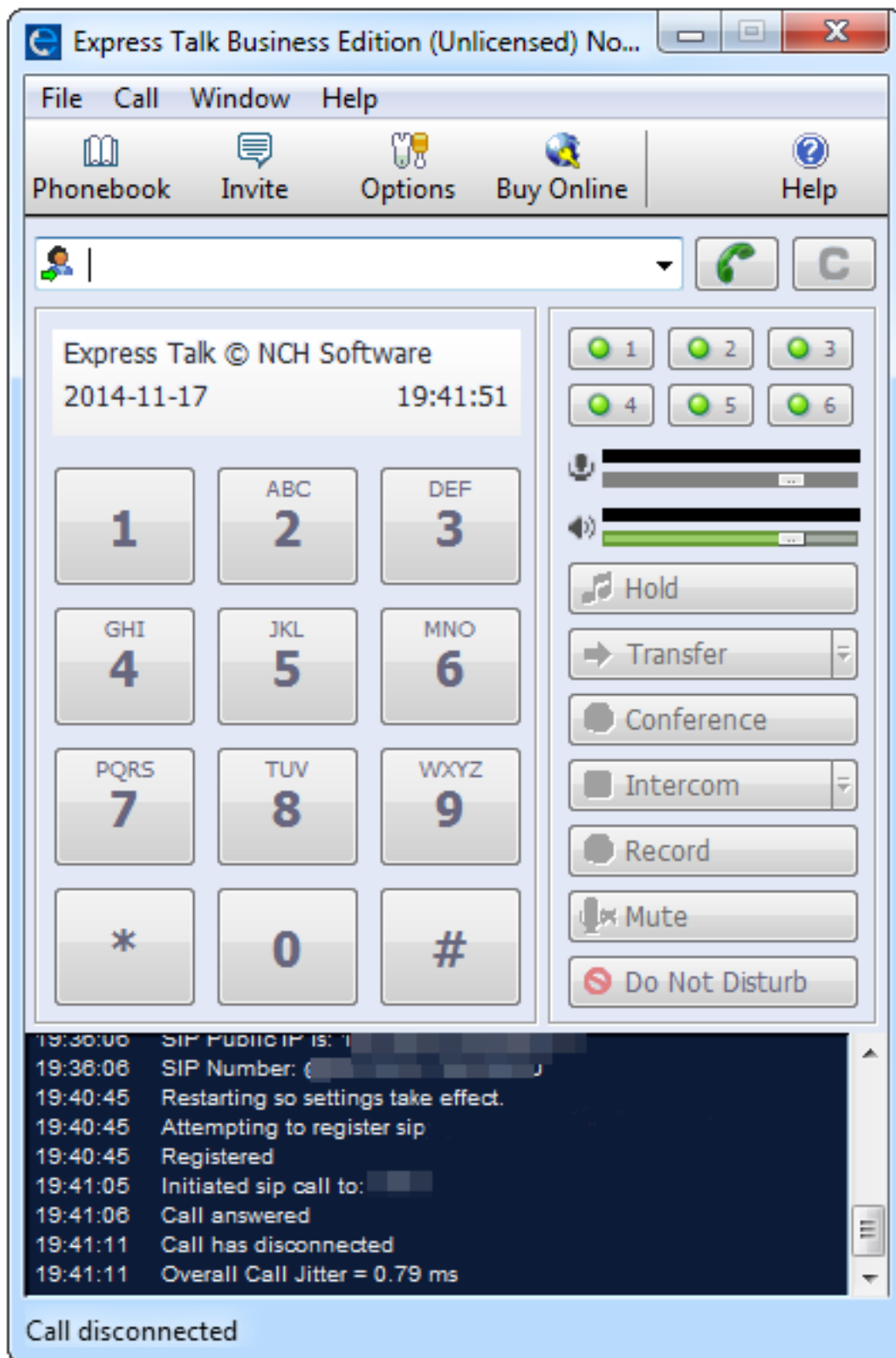
SIP Number (or User Name): (Your SIP number)

Password: (Your SIP number password)

The image shows a screenshot of a software window titled "Options" with a "Lines" tab selected. The window contains several configuration fields for SIP settings. At the top, there are tabs for "Emergency", "Other", "Speed Dial", "CRM", and "Voice Commands". Below these are sub-tabs for "Audio", "Devices", "Video", "Lines", "Network", "Hold/Record", and "Control". The "Lines" tab is active, displaying the following fields and options:

- Text: "By default all lines use the Default Line Settings. To change default settings, select Default Line Settings in the list."
- Label: "Settings for Line:" followed by a dropdown menu showing "Default Line Settings".
- Checkbox: "Use the Default Line Settings for this line"
- Label: "Full 'Friendly' Display Name:" followed by a text box containing "xxxxxxx" and an example "eg. Jane Doe, ACME Inc".
- Label: "Server (SIP Proxy or Virtual PBX):" followed by a text box containing "xxxxxxx" and an example "eg. computer.network, proxy.domain.com".
- Label: "SIP Number (or User Name):" followed by a text box containing "xxxxxxx" and an example "eg. 555123456 (or Jane.Doe)".
- Label: "Password:" followed by a text box containing "●●●●●●".
- Button: "Advanced Line Settings..."
- Checkbox: "Check for voice mail notifications on the default line (Requires Axon or IVM)"
- Label: "Voice mail extension number:" followed by an empty text box.
- Label: "Call Pickup prefix:" followed by a text box containing "*36".
- Text: "If you are in doubt about any of the above settings, please see the email from the SIP company you signed up with (or see Help)."
- Links: [Open recommended Free SIP Servers Web Page \(for internet calls\)](#) and [Download Virtual PBX Software \(usually for Offices or Call Centers\)](#).
- Buttons at the bottom: "OK", "Отмена", and "Справка".

6. Softphone is set.



Online URL:

<https://articles.spintel.net.au/article/express-talk-for-windows-setup.html>