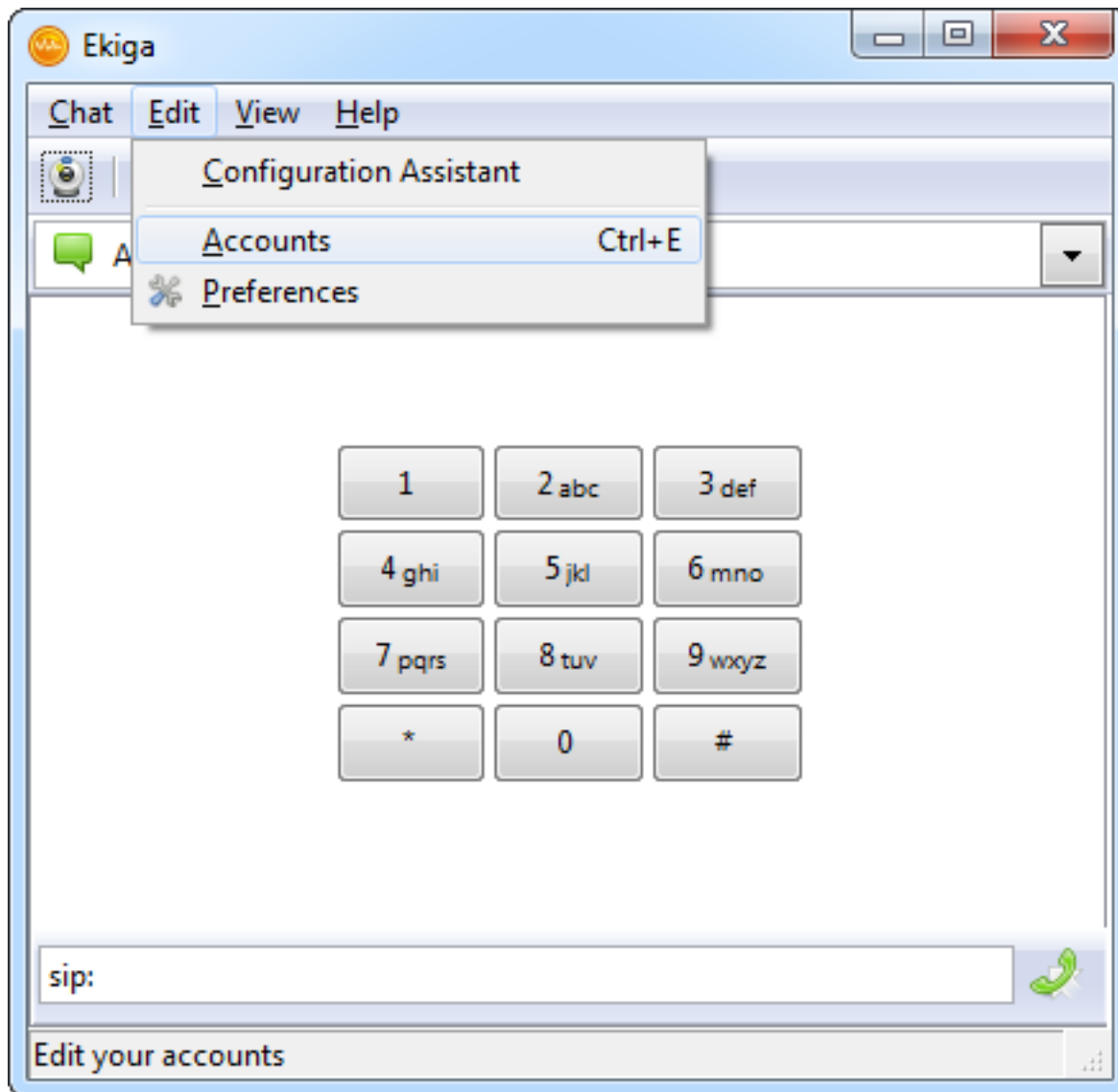


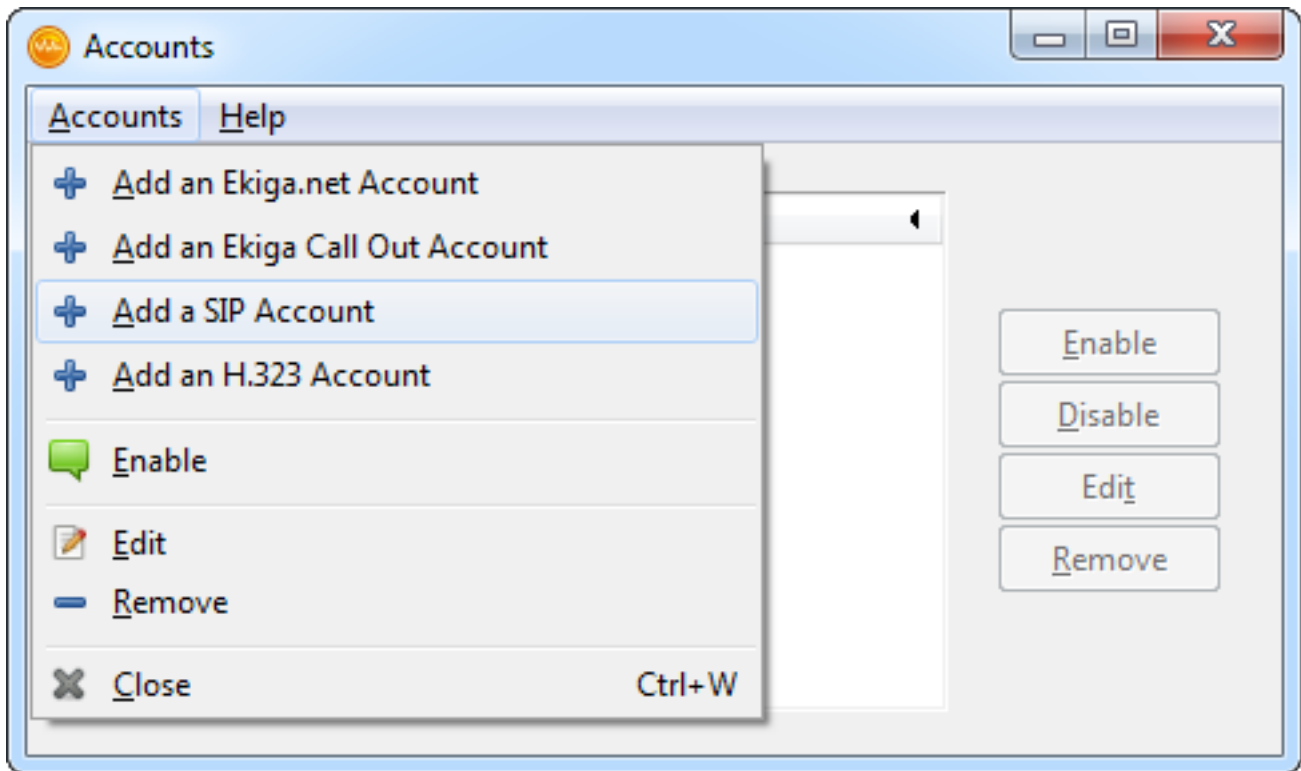
Ekiga for Windows Setup

Go to [ekiga](http://ekiga.org) website and download the latest version of the application.

1. Click on "Edit - Accounts"



2. Choose "Add a SIP account"



3. Enter the following settings:

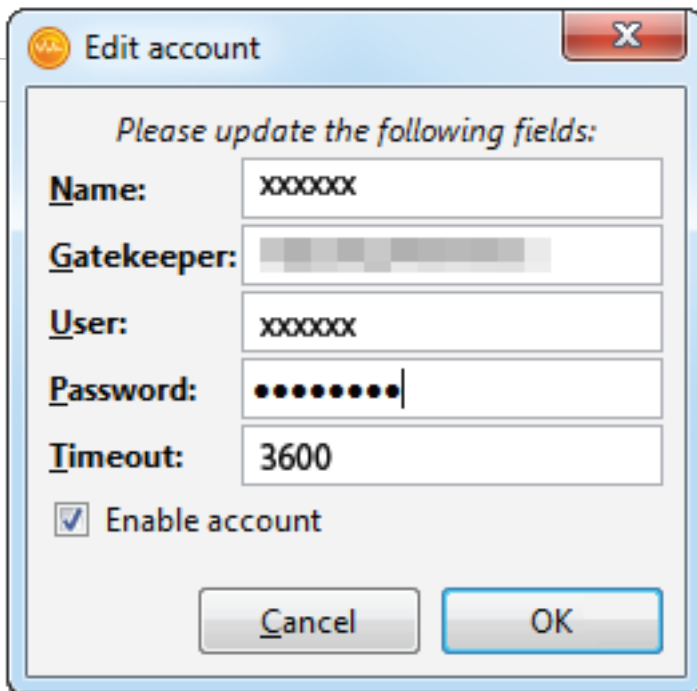
Name: (Your SIP number)

Gatekeeper: 203.23.236.96

User: (Your SIP number)

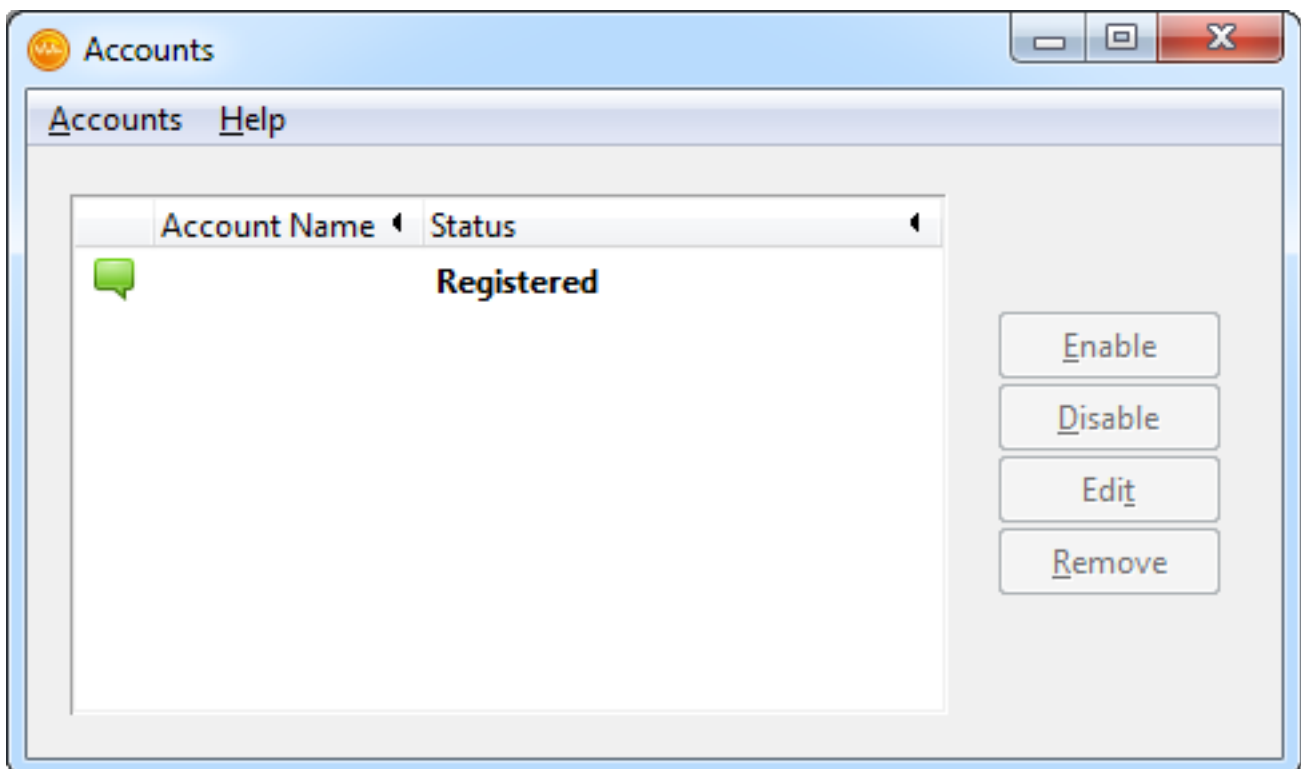
Authentication user: (Your SIP number)

Password: (Your SIP number password)



Check the "Enable account" box and press "OK".

4. Status should appear as "Registered"



Ekiga is set, and you can make calls.

Online URL:

<https://articles.spintel.net.au/article/ekiga-for-windows-setup.html>